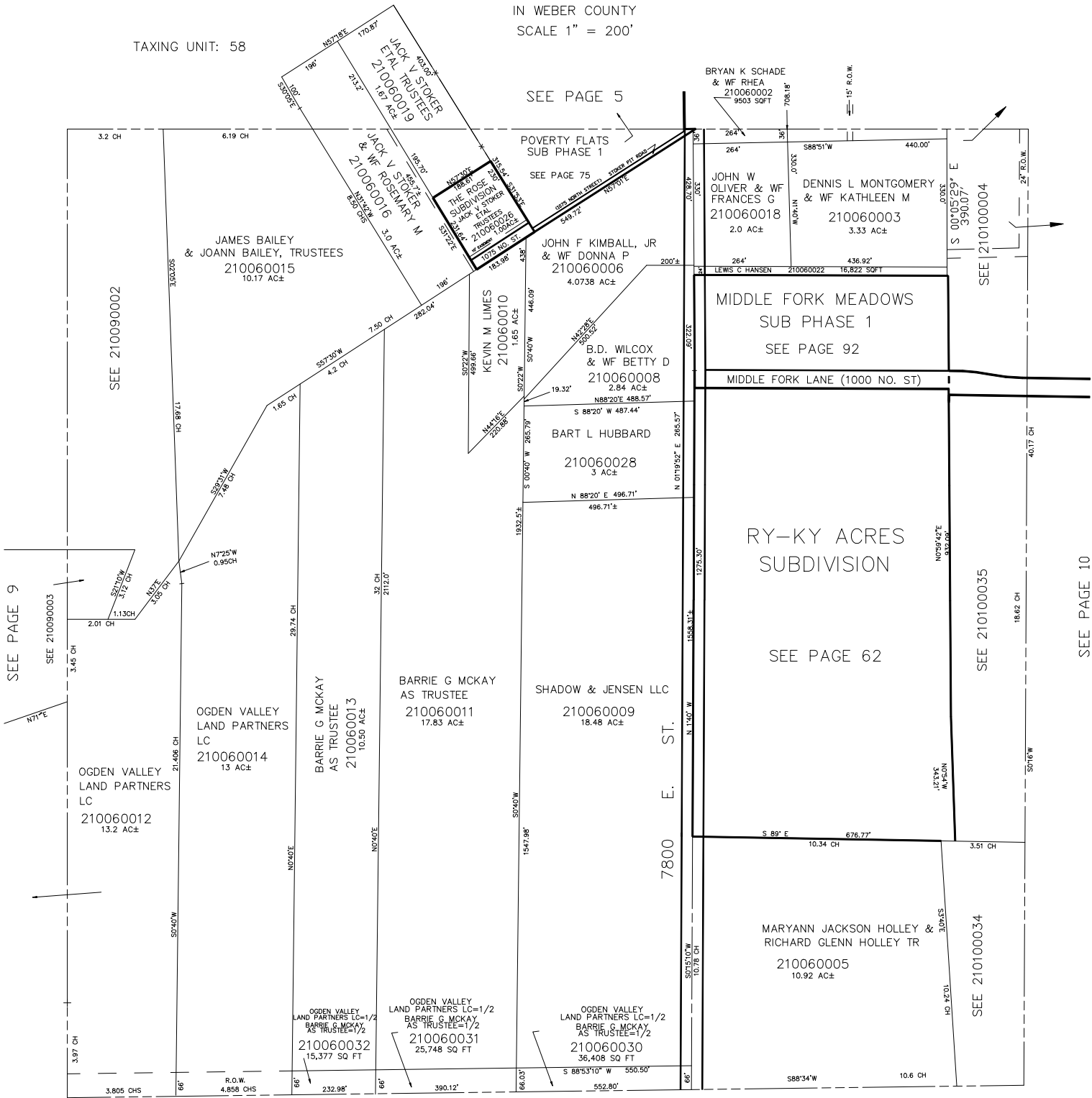


NE 1/4  
SECTION 7, T.6N., R.2E., S.L.B. & M.  
IN WEBER COUNTY  
SCALE 1" = 200'

TAXING UNIT: 58



SEE PAGE 9

SEE PAGE 5

SEE PAGE 75

BRYAN K SCHADE & WF RHEA  
210060002  
9503 SQFT

JOHN W OLIVER & WF FRANCES G  
210060018  
2.0 AC±

DENNIS L MONTGOMERY & WF KATHLEEN M  
210060003  
3.33 AC±

JOHN F KIMBALL, JR & WF DONNA P  
210060006  
4.0738 AC±

KEVIN M LIMES  
210060010  
1.65 AC±

B.D. WILCOX & WF BETTY D  
210060008  
2.84 AC±

BART L HUBBARD  
210060028  
3 AC±

SHADOW & JENSEN LLC  
210060009  
18.48 AC±

BARRIE G MCKAY AS TRUSTEE  
210060011  
17.83 AC±

OGDEN VALLEY LAND PARTNERS LC  
210060014  
13 AC±

BARRIE G MCKAY AS TRUSTEE  
210060013  
10.50 AC±

OGDEN VALLEY LAND PARTNERS LC=1/2 BARRIE G MCKAY AS TRUSTEE=1/2  
210060032  
15,377 SQ FT

OGDEN VALLEY LAND PARTNERS LC=1/2 BARRIE G MCKAY AS TRUSTEE=1/2  
210060031  
25,748 SQ FT

OGDEN VALLEY LAND PARTNERS LC=1/2 BARRIE G MCKAY AS TRUSTEE=1/2  
210060030  
36,408 SQ FT

MIDDLE FORK MEADOWS SUB PHASE 1  
SEE PAGE 92

MIDDLE FORK LANE (1000 NO. ST)

RY-KY ACRES SUBDIVISION  
SEE PAGE 62

MARYANN JACKSON HOLLEY & RICHARD GLENN HOLLEY TR  
210060005  
10.92 AC±

SEE 210100004

SEE 210100035

SEE 210100034

SEE PAGE 10

SEE PAGE 7